

FG-6 - FG-61 - FG-62 FLOW GUN

GB Before use, adjustment or maintenance, it is important to read this instruction manual very carefully. This manual must be stored in a safe place for any future reference that may be necessary.

This ANEST IWATA flow guns kit complies to ATEX regulations 94/9/EC.

Protection level: II 2 G X Suitable for using Zones 1 and 2.

X marking: Any static electricity discharge from the flow gun is to be diverted to the ground via the conductive air hose as stipulated.



IMPORTANT

This flow gun should be operated only by an adequately trained operator, for safe use and maintenance of the equipment. Any misuse or handling other than those indicated in this Instruction Manual is not covered by guarantee. ANEST IWATA disclaims all responsibility for any accident or damage caused by failure to observe the operational and safety procedures in this manual. In the interest of user friendliness, this manual contains information in a brief and concise form.

For any additional information you may require regarding flow gun operations, or if any missing parts or any damage during transportation is found, please contact your nearest ANEST IWATA Company (see last cover page).

Be sure to observe warnings and cautions in this instruction manual. If not, it can cause paint ejection and serious bodily injury by drawing organic solvent. Be sure to observe following marked items which are especially important.

WARNING	Indicates a potentially hazardous situation which, if not avoided, may result in serious injury or loss of life.
CAUTION	Indicates a potentially hazardous situation which, if not avoided, may result in minor or moderate injury or property damage.
IMPORTANT	Indicates notes which we ask you to observe. The safety precautions in this instruction manual are the minimum necessary conditions. Follow national and local regulations regarding fire prevention, electricity and safety as well as your own company regulations.

IMPORTANT SPECIFICATIONS

Max. Pressure:	250 bar (3600 PSI)	Max. Temperature:	
		Atmosphere	5 ~ 40 °C
		Air and fluid	5 ~ 43 °C

TECHNICAL SPECIFICATIONS

Model	Max. Operating pressure bar (PSI)	Use	Size of Nozzle Orifice	Shape of fluid needle tip	Fluid Hose connection	Mass g (lbs)
FG-6	250 (3600)	Sealants & Adhesives (High Viscosity)	Ø 3.0	Tapered seat	NPS 3/8"	440 (0.97)
FG-61					G 1/4"	
FG-62					G 3/8"	

Manufactured by:
ANEST IWATA Corporation 3176, Shinyoshida-cho, Kohoku-ku, Yokohama, 223-8501 Japan

ANEST IWATA Europe S.r.l.
Corso Vigevano, 46 - 10155, Torino (Italy)
Direct Tel. +39 011 - 22 74 402
Fax +39 011 - 22 74 000
info@anest-iwataeu.com
www.anest-iwataeu.com

ANEST IWATA Italia S.r.l.
Corso Vigevano, 46 - 10155, Torino (Italy)
Tel. diretto +39 011 - 24 80 868 - Fax: +39 011 - 85 19 44
info@anest-iwata.it www.anest-iwata.it

ANEST IWATA Iberica
Calle de Les Teixidores, 3-5
08918 - Badalona (Barcelona)
Tel.: +34 93 32 05 993 - Fax.: +34 93 32 05 965
info@anest-iwata.es www.anest-iwata.es

ANEST IWATA Deutschland
Mommensenstrasse 5
04329 Leipzig
Telefon: +49 (0)341 241 44 30 - Fax: +49 (0)341 252 55 95
info@anest-iwata.de www.anest-iwata.de

European Sales Branches:

ANEST IWATA Scandinavia
Ögärdesvägen 6C, 433 30 PARTILLE - Sweden
Tel. +46 (0)31 - 340 28 60 - Fax +46 (0)31 - 340 28 69
info@anest-iwata.se www.anest-iwata.se

ANEST IWATA France
25 rue de Madrid - 38070 St Quentin Fallavier - France
Tél. +33 (0)4 - 74 94 59 69 - Fax +33 (0)4 - 74 94 34 39
info@anest-iwata.fr www.anest-iwata.fr

ANEST IWATA U.K.
Unit 10 Little End Road - Eaton Socon
St. Neots - CAMBRIDGESHIRE
PE19 8JH
Tel.: +44 (0) 1480 40 54 19 Fax: +44 (0) 1480 21 76 10
enquiries@anest-iwata.co.uk www.anest-iwata.co.uk

PAINTING



WARNING
During painting, be sure to wear protective cover such as glasses, mask or gloves to avoid serious injury caused by fluids or solvent which might enter your eyes or you might inhale.

CAUTION
Before you use new flow gun for the first time, clean fluid passages inside it. If not done, rust preventive oil inside gun can cause sealing failure.



ATTENTION
As fluid pressure increases, fluid output increases with increasing wear on parts. For longer life span of flow gun, adjust fluid pressure as low as you can, maintaining satisfactory fluid output.

CLEANING AND MAINTENANCE

Fully clean after each use with compatible cleaning liquid, to ensure longer lifetime of the spray gun and good performance in the next job.



WARNING
During use, be sure to wear protective gear such as glasses, mask or gloves to avoid serious injury caused by paint or solvent which might enter your eyes or you might inhale.

Be sure to stop pump and reduce fluid pressure down to 0 Bar before disassembling flow gun.

Only an experienced person who is fully conversant with the equipment can do maintenance and inspection.



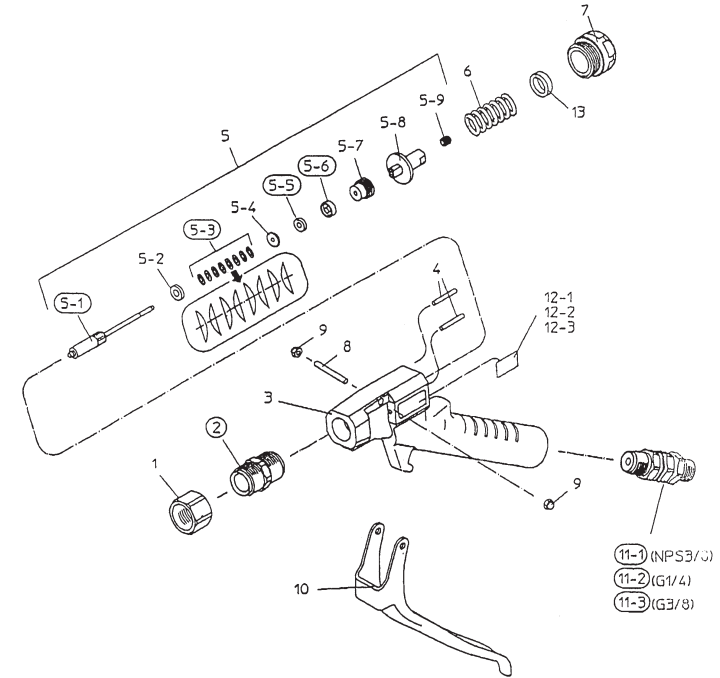
CAUTION
Never use commercial or other parts instead of ANEST IWATA original spare parts.

PROBLEMS AND REMEDIES

IMPORTANT: Never use commercial or other parts instead of ANEST IWATA original spare parts.

Problems	Cause	Remedies
Paint does not come out.	Nozzle tip is clogged.	Inspect, clean or replace.
	Paint is not fed.	Inspect pump.
Paint leaks or comes out weakly.	Paint leaks from nozzle	Reduce pump pressure down 150 bar.
	Flow resistance in pump is too high.	Reduce viscosity of paint.
	• Paint viscosity is high.	Use collar [13] (optional) or nozzle with larger orifice.
	• Nozzle orifice is small.	Inspect, clean or replace.
	Paint or dust sticks to needle packing (5-6).	Inspect, clean or replace.
	Paint or dust sticks to needle seat.	Inspect, clean or replace.
Paint leaks from nozzle gland set (2).	Seat between needle bar set (5-1) and nozzle gland set (2) is worn.	Replace worn part.
	The adjustment of needle bar set (5-1) is over-tightened.	Adjust by needle spring holder (5-8).
	Nozzle gland set (2) is loose.	Tighten.
Paint leaks from needle spring seat (7) and needle seat.	Needle packing seat is loose.	Adjust by needle spring holder (5-8).
	Needle packing (5-6) is worn, damaged or stuck with paint or dust.	Inspect, clean or replace.
	Needle set (5-1) is worn, damaged or stuck with paint or dust.	Inspect, clean or replace.
Paint leaks from nozzle holder (1).	Nozzle gland set (2) and taper section of nozzle are damaged or stuck with paint or dust.	Inspect, clean or replace.
	Nozzle holder (1) is loose.	Tighten.
Paint leaks from universal joint (11)	Wear of packing in universal joint	Replace.

SPARE PARTS LIST



DESCRIPTION	REF.PART
NOZZLE HOLDER	1
NOZZLE GLAND SET	● 2
GUN BODY	3
NEEDLE SEAT	4
FLUID NEEDLE SET	5
NEEDLE BAR SET	● 5-1
SPRING HOLDER	5-2
SPRING WASHER	● 5-3
PACKING HOLDER	5-4
SUB PACKING	● 5-5
NEEDLE PACKING	● 5-6
NEEDLE PACKING SEAT	5-7
NEEDLE SPRING HOLDER	5-8
SCREW	5-9
NEEDLE SPRING	6
NEEDLE SPRING SEAT	7
TRIGGER STUD	8
HEX. CAP NUT	9
TRIGGER SET	10
UNIVERSAL JOINT (NPS 3/8")	● 11-1
UNIVERSAL JOINT (G 1/4")	● 11-2
UNIVERSAL JOINT (G 3/8")	● 11-3
NAME PLATE	12
COLLAR	13

● Marked parts are wearable parts.

- Use optional collar [13] when you use very high viscosity paint, or a nozzle with higher size orifice when you use paint that are easily clogged.
- As nozzle is not included, refer to Operating procedure on page 3 and prepare it separately on your side.