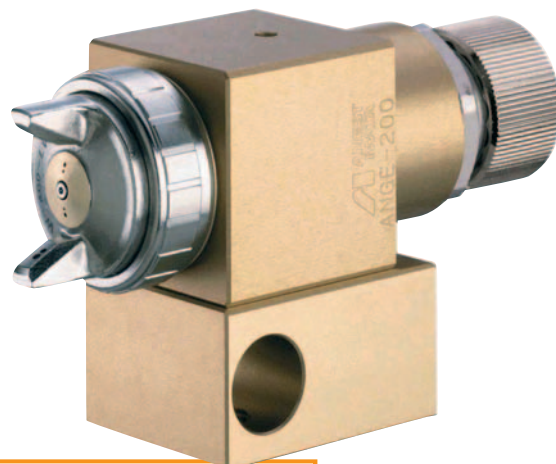




WRA 200 S8 Automatic Spray Gun

- High Transfer Efficiency
- Light Weight: only 460 g
- 2 fixing points
- Adjustable air cap, no need to disassemble
- Different air adjustment: air atomization and spray pattern
- 3 pneumatic commands needed
- Very compact
- External dimensions: 40 x 73 x 114 mm (without nipples)
- Accurate fluid adjustment knob lock mechanism
- Use: Robots, reduced spaces
- Immediate paint recirculation



CERTIFICATE OF COMPLIANCE

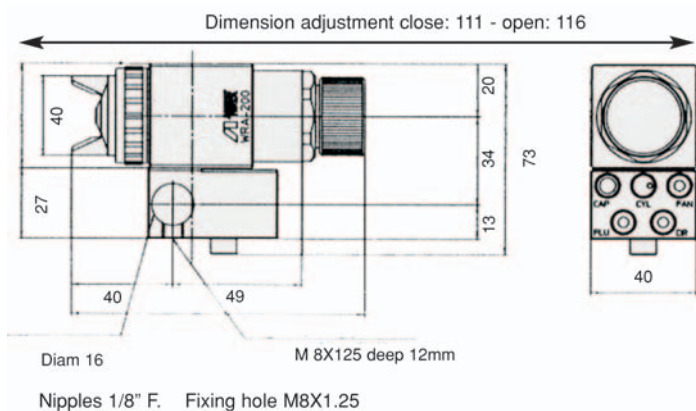
We certify that we have tested the Anest Iwata High T.E.C.W200/WA200/WRA200 pressure feed spray guns in accordance with ASTM Designation: D5286-95 Tests for transfer efficiency and that these spray guns comply with the requirements of the Environmental Protection Act 1990, Part I - 1997 Revision as detailed in PG6/34(97), PG6/23(97), PG6/40(94), PG6/41(94).

Transfer efficiencies achieved with the materials detailed in the test report were:

PRIMER	93.2%
SOLID COLOUR	85.9%
BASECOAT	82.3%
CLEAR LACQUER	73.5%

Signed for MIRRC THATCHAM: M. Smith
Chief Executive

THATCHAM
THE MOTOR INSURANCE
REPAIR RESEARCH CENTRE
Colthrop Way, Thatcham, Berkshire, RG19 4NR U.K.



Model	Type of feed	ø mm	bar	l/min	m ³ /min	mm	No.	g
WRA 200 S8	pressure	1.2	2.4	530	500	460	E2P	460

Max. Working Pressure: 6.8 bar (98 PSI)

Noise Level (LAeqT) 76.9 dB (A)

Temperature range: 5-40° C

Air nipple: G 1/4"

Fluid nipple: G 1/4"



declaration of ATEX conformity for use in zone 1 and in zone 2